



Cardinal Enhancement Corp.

New Construction/Remodeling

Cardinal Enhancement Corporation. is an innovative, full-service, design and build construction firm based in Indianapolis. We provide personalized, cost-effective service, with an emphasis on quality.

Over the past fifteen years, the Cardinal Enhancement Principals have focused on assisting Community Development Corporations in Marion County to revive areas that have been crime & drug scenes - we have assisted in motivating the community to take back their area, renew their pride and fix up and generate new excitement in their neighborhoods. To date; we have assisted the following Community Development Corporations; BOS, Martindale Brightwood, INHP, UNAW, WIDC, Eastside Community Development Corp., and most recently; King Park at Fall Creek Place.

The strength of our service lies in our hands-on approach to project management. Our designers have won several Historic Landmark Foundation awards for compatible development here, in Indianapolis. And we finish all homes with the care and detail as if this was going to be **our** house.

Our Neo-Craftsman style Bungalow was inspired by Chicago's bungalows, which account for nearly one-third of all Chicago single-family homes and remain a solid foundation for family life today.

One and a half stories, brick facing, generous windows, hardwood floors, and a full basement are key elements of this functional style originated by Frank Lloyd Wright in the 1940's. In a flash of inspiration, we added the "swoopy" dormer to capture one of the seldom seen period styles.

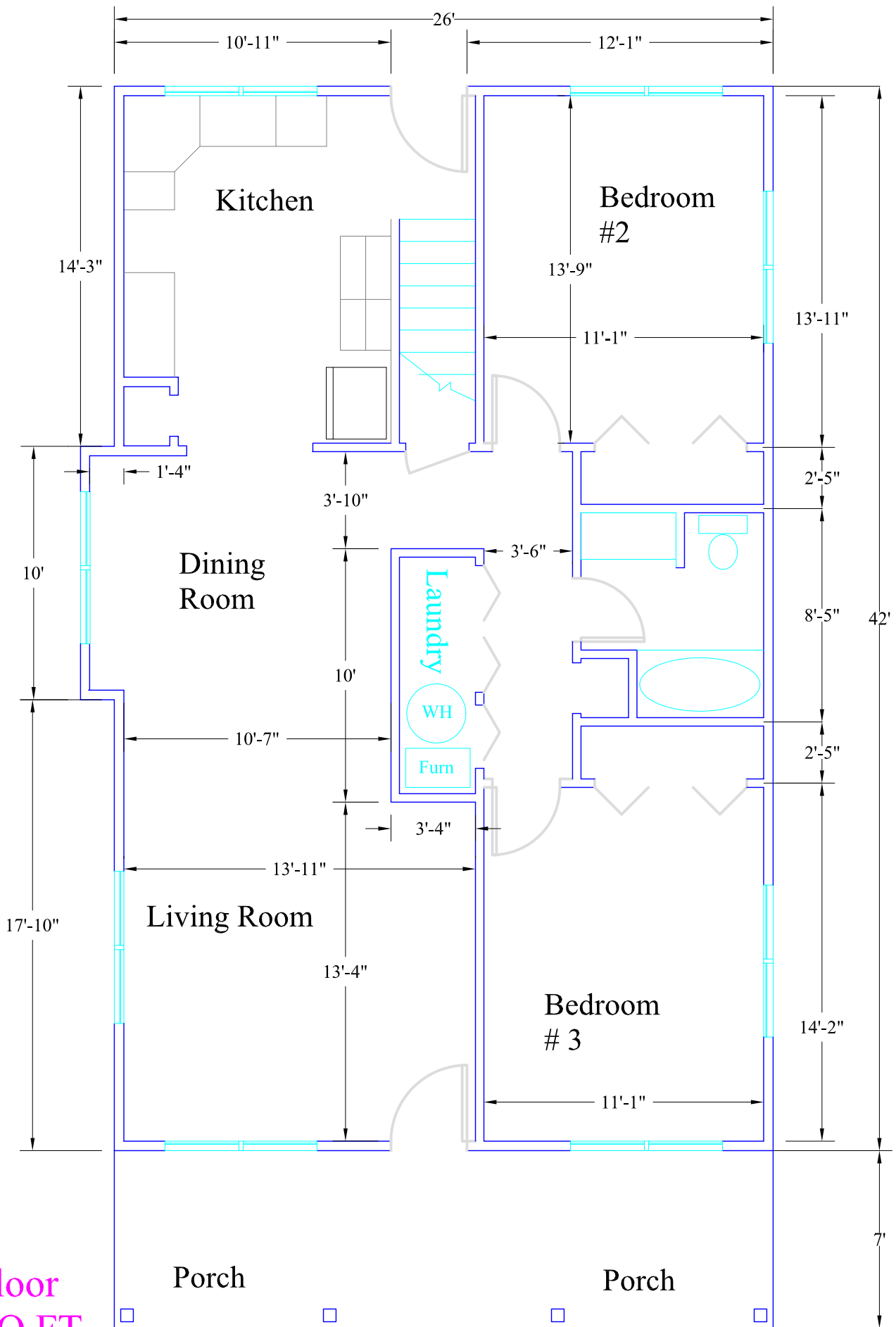
Modern features are; A kitchen and master bath worthy of the Ritz – R19 insulation in exterior 2x6 walls for energy efficiency, and a flexible floor plan that allows rooms to change uses over the years.

We sincerely hope you enjoy our artistic license here as much as we have enjoyed building this magnificent home in Fall Creek Place.

Yours Truly, William & Sharon Arnold along with all of the Cardinal Enhancement craftsmen.

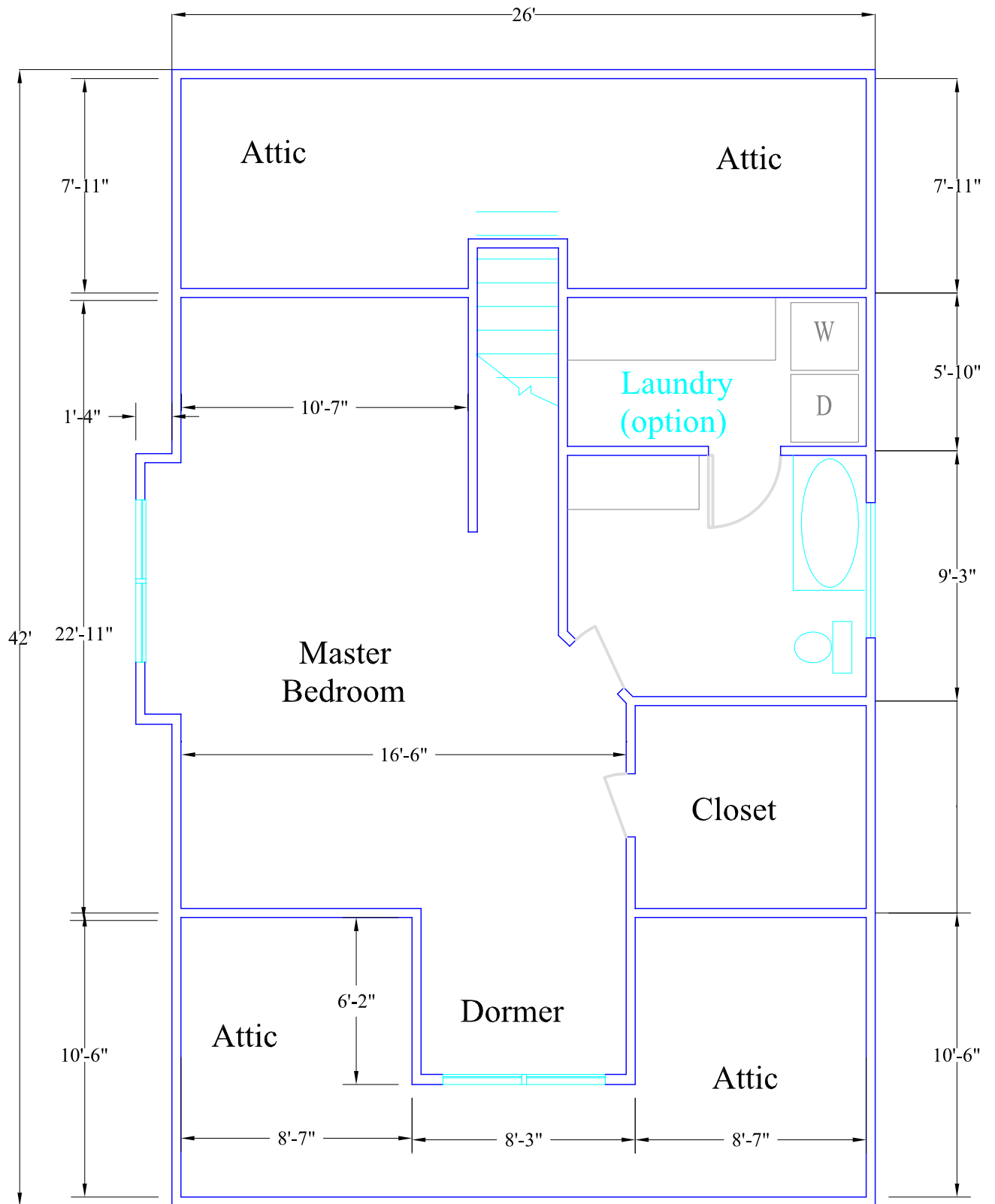


- **Neo-Craftsman style Bungalow**
- 3,000 Sq Ft (including basement)
- Nova-Brik (www.novabrik.com) ext.
- Most materials from Carter Lee Lumber company (<http://www.carterlee.com>)
- Interior easily customizable for **you**.
- **Cardinal Enhancement Corporation**
- Quality Service. Hard work, and
- Pride in a job well done.
- William & Sharon Arnold
- Office (317) 396-0518



First Floor
1100 SQ FT

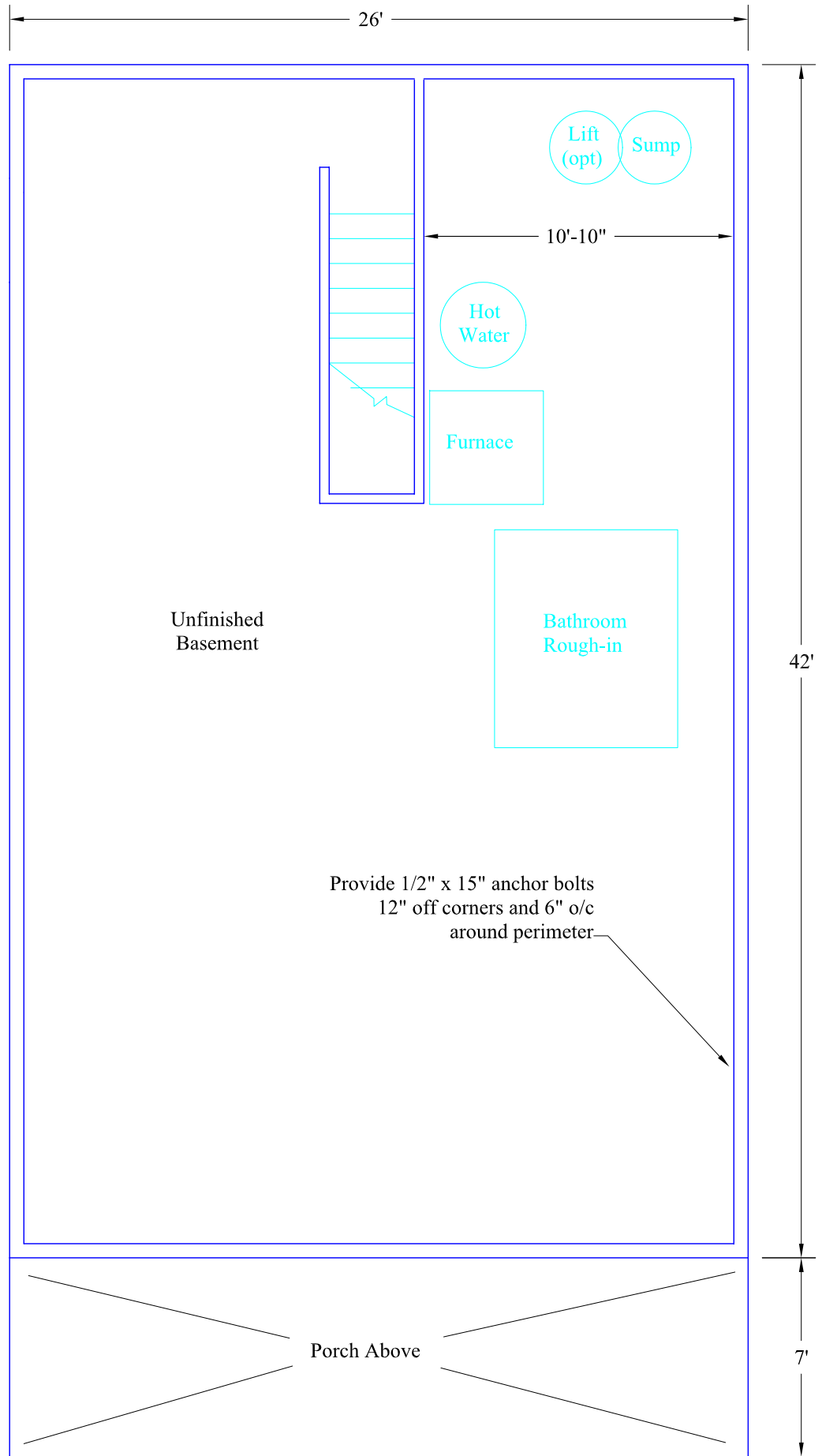
3/16" = 1' - Copyright 1998-2002 - Cardinal Enhancement Corp



Second Floor

650 SQ FT

3/16" = 1' - Copyright 1998-2002 - Cardinal Enhancement Corp



Basement
1100 SQ FT

3/16" = 1' - Copyright 1998-2001 - Cardinal Enhancement Corp